

**Electric
Tow
Tractors**



Note: Shown with Optional Hood, Side Panels, Over Head Guard, & Tilt Steering.

SERIES 700D

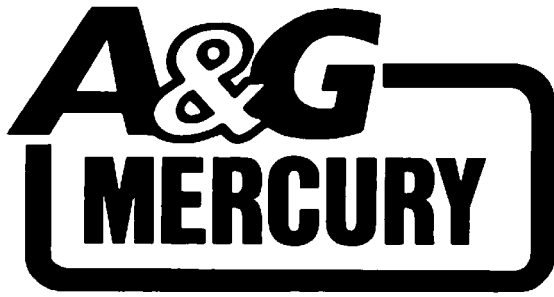
Model 751D Model 752D

Model 761D Model 762D

Model 771D Model 772D

| MODEL | DRAW BAR PULL | | VOLTS | WEIGHT WITHOUT BATTERY | |
|-----------|---------------|----------|-------|------------------------|-----------|
| | POUNDS | NEWTON'S | | POUNDS | KILOGRAMS |
| 751D/752D | 3,000 | 13,345 | 36,48 | 3,260 | 1,479 |
| 761D/762D | 4,000 | 17,793 | 36,48 | 3,760 | 1,706 |
| 771D/772D | 5,000 | 22,242 | 36,48 | 4,180 | 1,900 |

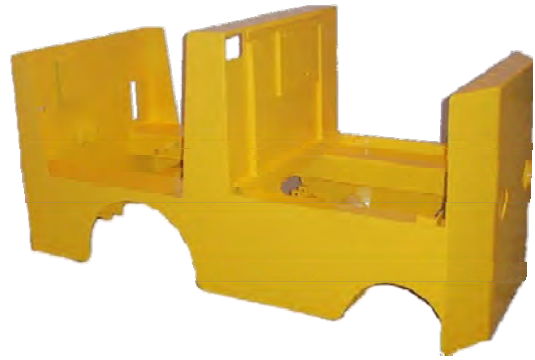
Drawbar pull is the ultimate start up pull on dry, freshly swept concrete, and on a level surface. **NOTE: IF UNIT IS TO BE USED ON RAMPS, PLEASE CONSULT THE FACTORY.**



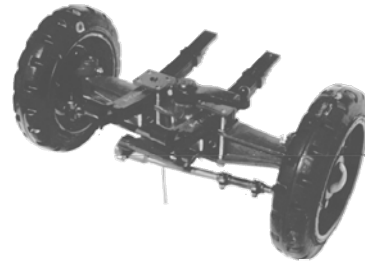
All Mercury tow tractors feature a one piece welded frame designed to protect components through a long service life, with reinforcement at high stress areas.

Leaf spring suspension, on both steer and drive axles, with bronze bushings is a feature unique to A & G Mercury tow tractors, which provides a smooth ride and reduces shock loads to the steering system. The tough, cast steel I-Beam Steer Axle is built to withstand long hours of service.

The GE Separately Excited motor controller is standard equipment on the Model 700D series. The GE Separately Excited motor controller combine the reliability of high efficiency power MOSSFET control with the added flexibility of microprocessor technology to provide smooth durable and customized control. The GE Separately Excited motor controller offers many safety and performance features resulting in direct cost savings benefits to your operation. Smart full time diagnostics, battery condition monitoring, and completely cold contactor switching are just some of features that ensure a safe truck as well as reduced maintenance cost.



One Piece Welded Frame



Leaf Spring Suspension Steer Axle



Heavy duty axle with high capacity disk brakes.



Shown with Optional Over Head Guard, Hood & Side Panels.

Standard Features and Options

ELECTRICAL

DRIVE MOTOR

Heavy duty General Electric shunt wound design 36/48 volt with Class H insulation and brazed commutator connections. Armature is dynamically balanced and mounted on ball bearings. Brush wear indicators and a thermostat for over heating protection is now standard equipment.

CONTROL PANEL

The GE Separately Excited motor controller, the standard controller, uses Mossfet technology with cold contactor switching, which will give extended brush, battery, and motor life which will give years of dependable service.

TRAVEL CONTROL

Foot operator accelerator and hand operated directional control.

LIGHTING

The Model 700D has headlights and stop/tail lights as standard equipment.

INSTRUMENT PANEL

Hour meter, battery indicator, maintenance indicator, key switch, and light switch.

DRIVE AXLE

Full Float carrier type housing with hypoid gears and two stage reduction and leaf spring suspension.

STEERING

Manual gear and cast steel I-Beam axle with needle bearings in king pins and center pivot for smooth, easy steering.

SERVICE BRAKES

Hydraulic disc on drive axle with 12.5" (318 mm) diameter rotor.

PARKING BRAKE

Mechanical disk type on the input shaft of the drive axle. The parking brake is automatically applied when the operator leaves the seat.

TRAVEL SPEED

The travel speed is adjustable from 0 to 8.03 mph (12.92 kmph) at 1300 rpm motor speed and 48 volt.

TIRES

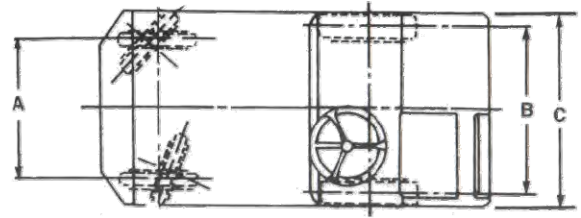
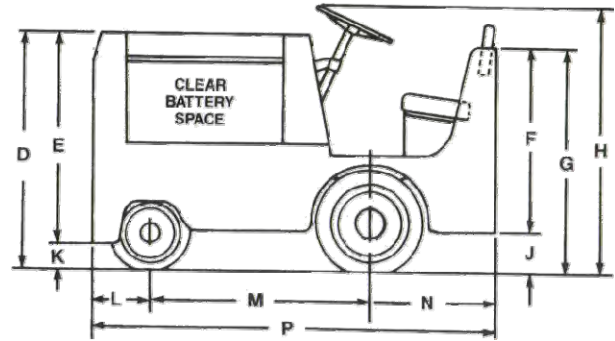
Front: 16.25" (413mm) x 4" (102mm) Solid Cushion.

Rear: 21" (533 mm) x 6" (152 mm) Solid Cushion.

OPTIONAL EQUIPMENT

- Deluxe Cab
- Economy Cab
- Hood & Side Panels
- Backup Alarm
- Rotating Amber Light
- Flashing Amber Light
- Grammer Seat (Cloth/Vinyl)
- Low Battery Indicator Alarm
- Solid Pneumatic Tires (On rear only)
- Mercury Hitch With Release
- Rose ZB98 (Modified)
- Rose ZB98 (Modified) with quick release
- BX51 Eye Hitch
- Tilt/Telescoping Steer Column

| DIMENSIONS, MODEL 700D | | |
|------------------------|--------|------|
| CODE | INCHES | MM |
| A | 30.5 | 775 |
| B | 36 | 914 |
| C | 42 | 1067 |
| D | 46 | 1168 |
| E | 39.25 | 997 |
| F | 38 | 965 |
| G | 46.75 | 1187 |
| H | 56.5 | 1435 |
| J | 8.75 | 222 |
| K | 6.25 | 159 |
| L | 12.5 | 318 |
| M | 48.5 | 1232 |
| N | 28.5 | 724 |
| P | 88.5 | 2248 |



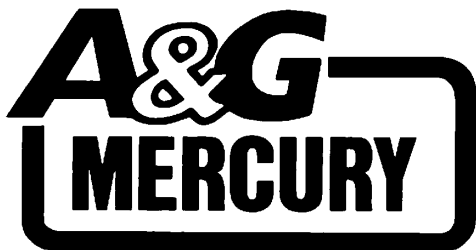
Outside Turning Radius: 72" (1828 mm)
 Intersecting Aisle: 66" (1676 mm)
 Standard Hitch Height: 12" (305 mm)

| BATTERY COMPARTMENT | | |
|---------------------|-----------------|-------------------|
| LENGTH | WIDTH | HEIGHT |
| 34" (864 mm) | 39" (990 mm) | 25.4" (645 mm) |

This unit is not sold with a Battery or Charger.

Specifications subject to change without notice.

Recommended Battery: Minimum 21 Plate,
 800 or 900 Amp-hr.



A & G Manufacturing Co., Inc.

P.O. Box 935 • 165 Gelsanliter Road
 Galion, Ohio 44833
 Telephone (419) 468-7433 Fax (419) 468-3990
 Visit our website at www.agmercury.com